

Join Us



Membership Benefits

A subscription to *Grasslands* quarterly journal

- The latest in grassland research
- Practicalities of grassland restoration
- Species spotlights
- Grasslands to visit

Discounts on Workshops, Events & Field Trips

- Learn from expert instructors
- Networking opportunities

And More!

- Access to the latest research & information on grasses and grasslands
- Opportunities to be involved in projects & advocacy
- Help to conserve and restore California's native grassland ecosystems



Our Work

Founded in 1991, the California Native Grasslands Association (CNGA) represents people concerned with the continued loss and degradation of California's grasslands, the most threatened ecosystem in California. Agriculture, invasion by exotic species, development, and other human-related activities have reduced California native grasslands by 99%. An astounding 90% of California's rare plant species live in grasslands. Birds and insects that rely on grasslands are among the fastest declining species in North America.



Contact Us

California Native Grasslands Association
PO Box 485
Davis CA 95617

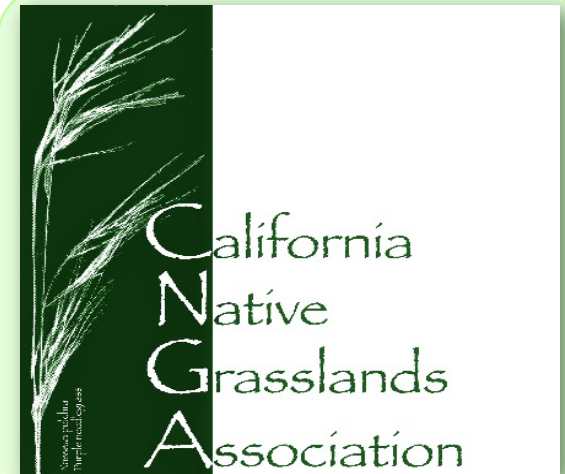
(530) 902-6009
admin@cnga.org

www.cnga.org

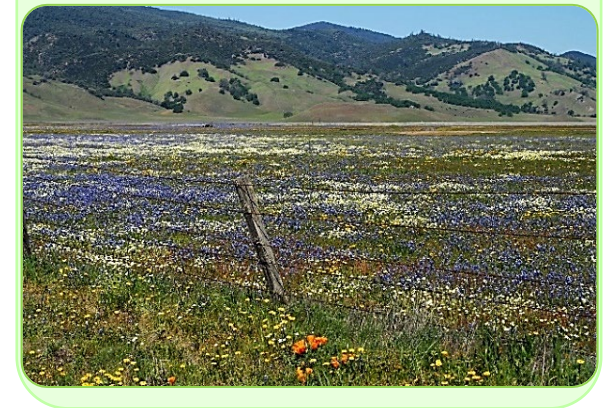
 canativegrassland

 cagrasslands

 californianativegrasslands



The only organization working exclusively to preserve and restore California's native grasslands



CNGA's Mission

To PROMOTE, PRESERVE, and RESTORE the diversity of California's native grasses and grassland ecosystems through education, advocacy, research, and stewardship.

Individual Memberships:

- Regular Membership: \$45/year
- Student: \$30/year (*with student ID*)
- Retired: \$30/year
- Sustaining: \$60/year (*auto renewal*)
- Lifetime Member: \$500 one-time payment
- Joint Membership with SERCAL: \$80/year
Save \$10! (*California Society for Ecological Restoration*)

Special Levels for Individuals:

*Wildflowers enrich grassland diversity.
Giving at these levels enriches the diversity
of programs CNGA provides!*

- Redmaids: \$125/year
Join at this level and receive a CNGA hat!
- Baby Blue Eyes: \$250/year
Join at this level and receive a CNGA t-shirt!
- California Poppy: \$500/year
*New California Poppy members receive a
CNGA t-shirt and hat!*
- Goldenbanner: \$1,000/year
*New Goldbanner members receive a CNGA
t-shirt, hat, and set of grass posters!*

**Join online at
www.cnga.org**

Who are we?

CNGA members are conservationists, resource managers, restoration practitioners, students, public agency employees, consultants, farmers, ranchers, seed producers, nursery owners, homeowners, and native plant enthusiasts.



Learn more at www.cnga.org

You may enroll or renew by:

- (1) Visiting our website at www.cnga.org
- (2) Mailing a check payable to CNGA, PO Box 485, Davis, CA 95617
- (3) Mailing your credit card information entered on the form below, or
- (4) Calling us at (530) 902-6009 with your credit card information.

Name _____

Affiliation _____

Street _____

City _____ State _____ Zip _____

Phone _____

Email _____

Member Level _____

Credit Card _____

Expiration Date _____ CVV _____

Corporate/Agency Memberships:

- Muhlenbergia rigens***: \$1,000/year
 - Large print ad in *Grasslands* journal (4 issues/year) Ad Size: Large 3" x 5"
 - Large online ad at top of webpage w/link to member website
 - Print Grassland subscriptions: 4
 - Max # Employee Members: 8
- Stipa pulchra***: \$500/year
 - Medium print ad in *Grasslands* journal (4 issues/year) Ad Size: Medium 3" x 2.5"
 - Medium online ad at below *Muhlenbergia rigens* w/link to member website
 - Print Grassland subscriptions: 3
 - Max # Employee Members: 6
- Poa secunda***: \$250/year
 - Small print ad in *Grasslands* journal (4 issues/year) Ad Size: Small 2.25" x 1.5"
 - Small online ad at below *Stipa pulchra* w/link to member website
 - Print Grassland subscriptions: 2
 - Max # Employee Members: 4
- Associate/Agency**: \$125/year
 - Online listing w/link to member website
 - Text listing in *Grasslands* journal (4 issues/year)
 - Print Grassland subscriptions: 1
 - Max # Employee Members: 2